

# FOR WHOM THE DIE ROLLS

February 2013

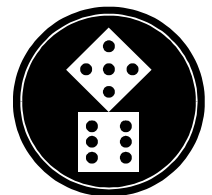
Published by Keith Thomasson

Issue 199

This page has been added to the PDF copy so that reports that appear on facing pages in the paper copy are shown side-by-side.



£1.50



# INSIDE STORY

This is FOR WHOM THE DIE ROLLS #199, a game playing magazine for game players, published by Keith Thomasson, 14 Stepnells, Marsworth, Near Tring, Herts, HP23 4NQ. This issue costs £2.00 (including postage).

E-mail: [Keith@Thomasson.com](mailto:Keith@Thomasson.com) Web site: [www.fwtwr.com](http://www.fwtwr.com)  
Subscription payments can be sent via PayPal to [Keith@Thomasson.com](mailto:Keith@Thomasson.com)  
Please specify the currency for international payments as GBP

## START

Welcome to issue #199. 2013 has yet to be greeted with more than mediocre enthusiasm, mostly due to the constant presence of colds, coughs, sneezing fits and fevers. It feels as if the bug has been with me for months, whereas it is probably a series of bugs working like a relay race, with no idea where the finishing line is.

I know I am not alone in this, so my commiserations to anyone else in the same boat, and let's hope those bugs just get in that boat and go for a long holiday. Soon.

From next month I am reverting back to a single deadline for all of the games. The reduced number of games means that it is no longer so important to have a separate deadline for the 18xx games. It would still be nice to see orders arriving by that deadline, as some people have come to need regular reminders... The important thing to bear in mind is that the one and only deadline is now the Friday one, not the Wednesday one.

For the past couple of years I have kept a record of the games I have played, with no specific aim in mind. You can do this on BoardGameGeek, but I have no desire to share things quite so openly. Having said that, I am going to share a little here.

For 2011 and 2012 my win rate was very satisfying, being over 50% by the end of January (no, that didn't last...in either year). This year has proved the exact opposite, with the 50% credit going to fourth places, with only one win recorded. As that was a single round of Coloretto, I'm not sure I should even be counting that, as Coloretto should be played for a number of rounds.

On the positive side, my last two games gave me two of my three second places so far, so perhaps things are looking up.

I blame the bugs. They have to be useful for something!

The snowman on our cover is (well, was...) outside The Red Lion, our local drinking venue. George likes making snowmen, but she prefers to do something a little out of the ordinary. If I had taken this photo further to the right, her snowman in the stocks would have shown up, while right outside the pub was a drunken snowman lying down one on the the bench seats, complete with empty bottles. When the thaw arrived he wasn't just drunk, but became totally legless. ★



## 1870-A32

An early end to this one.

## GAME OVER

|     |                |       |       |
|-----|----------------|-------|-------|
| 1st | Adam Romoth    | 1,889 | 26.7% |
| 2nd | John Shelley   | 1,706 | 24.1% |
| 3rd | Lyndon Gurr    | 1,567 | 22.1% |
| 4th | Willem Moene   | 1,508 | 21.3% |
| 5th | Lionel Robbins | 408   | 5.8%  |

**Lyndon Gurr (3rd):** It seemed clear from a long way out that Lionel was angling for a bankruptcy. When he chose not to precipitate it in ORs 9 and 10 it seemed he may have changed his mind and I had got away with forgetting to order FW to buy a new train. So it came as a surprise that he did eventually bankrupt himself in OR11. Well played to Adam for his win, where he finished running a single company that didn't own a train, having timed the ATSF connection run just right.

**Lionel Robbins (5th):** I apologise to the other players for the timing of my bankruptcy, although the actual event was inevitable. I can forgive myself for not spotting the double dump that left me with an asset stripped SLSF, but the rest of my game was pretty poor, so last place was well deserved. Congrats (through slightly gritted teeth) to Adam and thanks to the other players for the game and to Keith for his patient refereeing.

It isn't always easy to see whether player is angling for a bankruptcy or hanging on in the hope of avoiding one. There comes a point where hanging on any longer just prolongs the agony for everyone, and the decision has to be made to bow to the inevitable. ☒

### 1870

Game A32  
Keith Thomasson

| Private Companies                 | Cost  | Revenue |
|-----------------------------------|-------|---------|
| 1 Lionel River Shipping Company   | \$20  | \$5     |
| 2 Mississippi River Barge Company | \$40  | \$10    |
| 3 The Louisiana Cattle Company    | \$20  | \$10    |
| 4 The Gulf Shipping Company       | \$50  | \$15    |
| 5 St Louis San Francisco Railway  | \$140 | n/a     |
| 6 Missouri Central Texas Railway  | \$100 | \$20    |

| Public Companies | Company       | Destination      |
|------------------|---------------|------------------|
| ATSF             | 11 Leoka      | 1111 Southland   |
| FW               | 12 Gulf South | 1211 Denver      |
| AMS              | 2 Mobile      | 8020 St Louis    |
| IC               | 2 Jackson     | 8110 Chicago     |
| MS               | 1 Kansas City | 8111 Southland   |
| MP               | 3 St Louis    | 8110 Dallas      |
| SLSF             | 1 Springfield | 8110 Southland   |
| SP               | 1 Southland   | 1111 New Orleans |
| SSW              | 2 Memphis     | 1011 New York    |
| TF               | 2 Dallas      | 1011 New Orleans |

© Keith Thomasson 2013



**1825-X31**

Many dividends are retained.

**OR14 - SR9**

| OR14 | Pres | Lays            | Run | Pay | Notes | Price | Credit | Trains  |
|------|------|-----------------|-----|-----|-------|-------|--------|---------|
| LNWR | LR   | -               | 460 | No  | ①     | 126   | 770    | 4 U3    |
| Mid  | MH   | 51:P18:4        | 140 | No  | -     | 112   | 240    | U3      |
| NER  | WM   | 52:J14:4        | 150 | Yes | ②     | 90    | 230    | 5       |
| NBR  | JS   | 15:H4:1         | 510 | No  | -     | 205   | 610    | 5 4 3   |
| Cal  | JS   | 12:G3:2         | 350 | No  | -     | 67    | 370    | 4 4     |
| L&YR | LR   | -               | 410 | Yes | -     | 230   | 110    | 3T 3T 3 |
| GNR  | MH   | 3:K13:3 8:L16:5 | 270 | Yes | -     | 126   | 10     | 5 3     |
| GCR  | LR   | 28:O17:6        | 200 | No  | ③     | 90    | 60     | 5 3     |
| GSWR | JS   | 9:H12:1         | 350 | No  | -     | 76    | 420    | 5 3     |

- Notes: ① 100 to the bank for a token in N10  
 ② 40 to the bank for terrain costs  
 ③ 160 to the LNWR for a '3' train

**Stock Round 9**

| Willem                   | Mike        | (John Boocock) | Lionel                    | John Shelley             |
|--------------------------|-------------|----------------|---------------------------|--------------------------|
| + NER new                | + LNWR pool | x              | - 1 Cal<br>+ FR/Dir {142} | + Cal pool               |
| x                        | + LNWR pool | x              | x                         | - TWW<br>+ M&C/Dir {126} |
| x                        | x           | x              | x                         | x                        |
| <i>Priority for SR10</i> |             |                |                           |                          |

| Cash Flow      | b/f | OR14 | SR9  | c/f | Value | %    | Certs |
|----------------|-----|------|------|-----|-------|------|-------|
| Lionel Robbins | 740 | 287  | -501 | 526 | 3,601 | 26.7 | 18    |
| John Shelley   | 956 | 1-   | -541 | 425 | 2,932 | 21.8 | 18    |
| Willem Moene   | 354 | 214  | -82  | 486 | 2,525 | 18.8 | 18    |
| Mike Hutton    | 411 | 311  | -252 | 470 | 3,103 | 23.0 | 18    |
| (John Boocock) | 609 | 30   | 0    | 639 | 1,302 | 9.7  | 6     |

| Portfolio      | Privates | LNWR | Mid | NER | NBR | Cal | L&YR | GNR | GCR | GSWR | FR | M&C |
|----------------|----------|------|-----|-----|-----|-----|------|-----|-----|------|----|-----|
| Lionel Robbins | -        | 5D   | -   | -   | 1   | -   | 7D   | -   | 7D  | -    | 4D | -   |
| John Shelley   | -        | -    | -   | -   | 8D  | 5D  | -    | -   | -   | 7D   | -  | 4D  |
| Willem Moene   | C&HP     | -    | 5   | 9D  | -   | 2   | 2    | -   | -   | -    | -  | -   |
| Mike Hutton    | -        | 3    | 5D  | -   | 1   | -   | 1    | 10D | -   | -    | -  | -   |
| (John Boocock) | L&M      | 2    | -   | -   | -   | 3   | -    | -   | -   | -    | -  | -   |

|                |      |     |     |     |     |       |     |     |     |     |     |
|----------------|------|-----|-----|-----|-----|-------|-----|-----|-----|-----|-----|
| Bank (new)     | -    | -   | 1   | -   | -   | -     | 3   | 3   | 3   | 6   | 6   |
| Price (new)    | 100  | 82  | 82  | 76  | 76  | 71    | 71  | 71  | 67  | 142 | 126 |
| Bank (pool)    | A&F  | -   | -   | -   | -   | -     | -   | -   | -   | -   | -   |
|                | TWW  | -   | -   | -   | -   | -     | -   | -   | -   | -   | -   |
|                | S&D  | -   | -   | -   | -   | -     | -   | -   | -   | -   | -   |
| Price (pool)   | 126  | 112 | 90  | 205 | 67  | 230   | 126 | 90  | 76  | 142 | 126 |
| Company credit | 770  | 240 | 230 | 610 | 370 | 110   | 10  | 60  | 420 | 18  | 134 |
| Tokens         | 1    | 1   | 3   | 1   | 2   | 2     | 2   | 1   | 1   | 1   | 1   |
| Trains         | 4 U3 | U3  | 5   | 5 4 | 4 4 | 3T 3T | 5 3 | 5 3 | 5 3 | 5   | 3T  |
|                |      |     |     | 3   | 3   |       |     |     |     |     |     |

Bank cash: 12,454 Certificate limit: 18 Trains: 2 x '6', 2 x '7'

| Tiles | Tile number/Availability |       |      |      |      | Three Operating Rounds between Stock Rounds |      |      |      |      |      |       |
|-------|--------------------------|-------|------|------|------|---|------|------|------|------|------|-------|
| 1/2   | 2/2                      | 3/1   | 4/4  | 5/4  | 6/4  | 7/4   | 8/7  | 9/8  | 55/2 | 56/2 | 69/2 | 114/1 |
| 115/1 | 12/4                     | 13/1  | 14/4 | 15/1 | 16/2 | 17/1  | 18/2 | 19/3 | 20/1 | 21/1 | 22/1 | 23/5  |
| 24/4  | 25/-                     | 26/2  | 27/1 | 28/2 | 29/3 | 30/1  | 31/1 | 32/3 | 33/- | 34/- | 38/1 | 39/3  |
| 40/2  | 41/3                     | 42/3  | 43/3 | 44/3 | 45/- | 46/-  | 47/3 | 63/- | 64/- | 65/1 | 66/2 | 67/1  |
| 68/1  | 118/1                    | 119/1 | 49/1 | 50/1 | 51/1 |   |      |      |      |      |      |       |

1825  
Units 2-3

GameX31  
Referee:  
Keith Thomasson

| Minor Companies |      |      |        |
|-----------------|------|------|--------|
| Company         | Home | Base | Train  |
| Furness         | M9   | FR   | 5 550  |
| GNoS            | B12  | GS   | 5 550  |
| Highland        | B8   | HR   | U3 410 |
| M&C             | K7   | MC   | 3T 370 |
| North Staffs    | Q13  | NS   | 3T 370 |

© Keith Thomasson 2013

Orders required for the following rounds By the early deadline  
 OR15, OR16 Adjudication can pause between rounds if requested



**1829-A30**

Very little track activity at the last stage.

**OR22 - OR23**

| OR22 | Pres | Lay      | Survey | Run | Pay | Notes | Price | Credit | Trains |
|------|------|----------|--------|-----|-----|-------|-------|--------|--------|
| LNWR | PC   | -        | ►U25   | 250 | Yes | -     | 200▲  | 10     | 5      |
| GWR  | RT   | -        | ►U23   | 510 | Yes | -     | 275▲  | 30     | 5 4    |
| Mid  | JS   | 24:N18:1 | ►P14   | 640 | Yes | -     | 142▲  | 160    | 7 5    |
| LSWR | Rcvr | -        | ►V10   | 480 | No  | -     | 58▼   | 800    | 7 7    |
| GNR  | LR   | -        | ►O11   | 240 | Yes | ①     | 180▲  | 0      | 4      |
| LBSC | PC   | -        | ►Y11   | 300 | Yes | -     | 100▲  | 20     | 7      |
| GER  | RT   | -        | ►S17   | 220 | Yes | -     | 180▲  | 10     | 4      |
| GCR  | RT   | -        | ►S5    | 440 | Yes | -     | 71▲   | 10     | 5 4    |
| L&YR | JS   | -        | ►P20   | 410 | Yes | -     | 76▲   | 120    | 5 4    |

Notes: ① 100 to the bank for a token in O11

| OR23 | Pres | Lay      | Survey | Run | Pay | Notes | Price | Credit | Trains |
|------|------|----------|--------|-----|-----|-------|-------|--------|--------|
| LNWR | PC   | -        | ►S23   | 210 | Yes | -     | 225▲  | 10     | 5      |
| GWR  | RT   | -        | ►S21   | 510 | Yes | -     | 300▲  | 30     | 5 4    |
| Mid  | JS   | -        | ►N12   | 600 | Yes | -     | 160▲  | 160    | 7 5    |
| LSWR | Rcvr | 10:V10:3 | ►V12   | 480 | No  | -     | 56▼   | 1,240  | 7 7    |
| GNR  | LR   | -        | ►M15   | 240 | Yes | -     | 200▲  | 0      | 4      |
| LBSC | PC   | 8:Y11:1  | ►X10   | 300 | Yes | -     | 112▲  | 20     | 7      |
| GER  | RT   | 9:S17:3  | ►V14   | 220 | Yes | -     | 200▲  | 10     | 4      |
| GCR  | RT   | -        | ►S7    | 450 | Yes | -     | 76▲   | 10     | 5 4    |
| L&YR | JS   | 7:P20:6  | ►O19   | 410 | Yes | -     | 82▲   | 120    | 5 4    |

| Cash Flow      | b/f   | OR22 | OR23 | c/f   | Value | %     | Certs |
|----------------|-------|------|------|-------|-------|-------|-------|
| Pete Campbell  | 1,689 | 606  | 590  | 2,885 | 6,561 | 19.5▲ | 17    |
| Rob Thomasson  | 3,926 | 786  | 791  | 5,503 | 8,912 | 26.4▼ | 17    |
| John Shelley   | 2,527 | 925  | 893  | 4,345 | 7,796 | 23.1▲ | 18    |
| Lionel Robbins | 1,159 | 635  | 616  | 2,410 | 7,331 | 21.7▼ | 18    |
| [John Boocock] | 1,343 | 233  | 225  | 1,801 | 3,114 | 9.2▼  | 11    |

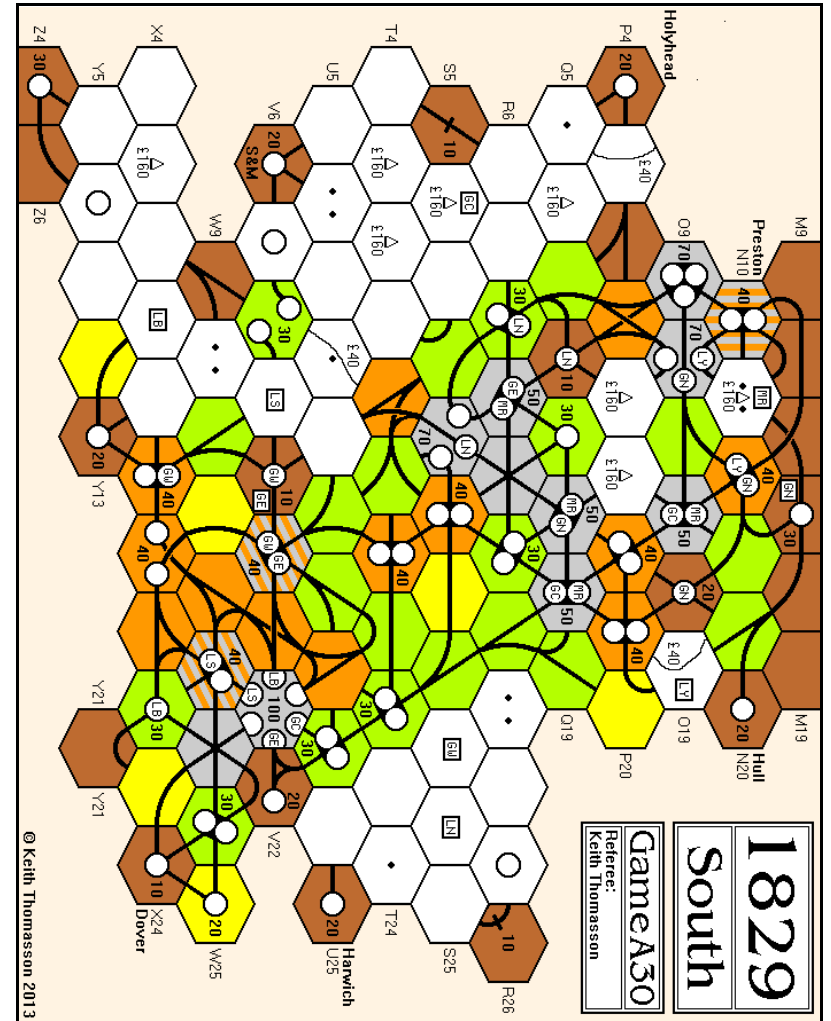
| Portfolio      | Priv/SP                    | LNWR | GWR | Mid | LSWR | GNR | LBSC | GER | GCR | L&YR |
|----------------|----------------------------|------|-----|-----|------|-----|------|-----|-----|------|
| Pete Campbell  | Holyhead                   | 4D   | 2   | -   | -    | 4   | 5D   | -   | -   | 3    |
| Rob Thomasson  | -                          | 1    | 5D  | -   | -    | -   | -    | 5D  | 9D  | -    |
| John Shelley   | Harwich                    | 1    | 1   | 7D  | -    | -   | 1    | 2   | -   | 7D   |
| Lionel Robbins | Hull,<br>Preston,<br>Dover | 3    | 2   | 2   | -    | 5D  | -    | 3   | 1   | -    |

⊕ [John Boocock]

|                  |                       |     |     |       |     |     |     |     |     |              |  |
|------------------|-----------------------|-----|-----|-------|-----|-----|-----|-----|-----|--------------|--|
| Bank (new)       | -                     | -   | -   | -     | -   | -   | -   | -   | -   | -            |  |
| Price (new)      | 100                   | 90  | 82  | 76    | 71  | 67  | 64  | 61  | 58  | -            |  |
| Bank (pool)      | -                     | -   | -   | 5     | -   | -   | -   | -   | -   | -            |  |
| Price (pool)     | 225                   | 300 | 160 | 56    | 200 | 112 | 200 | 76  | 82  | -            |  |
| Company credit   | 10                    | 30  | 160 | 1,240 | 0   | 20  | 10  | 10  | 120 | -            |  |
| Tokens           | 3                     | 3   | 1   | 3     | 1   | 2   | 1   | 1   | 1   | 1            |  |
| Trains           | 5                     | 5 4 | 7 5 | 7 7   | 4   | 7   | 4   | 5 4 | 5 4 | -            |  |
| Bank cash: 3,056 | Certificate limit: 18 |     |     |       |     |     |     |     |     | Trains: None |  |

I expect the bank to run out in the next operating round, but I'm asking for two just incase.

| Tiles | Tile number/Availability |      |      |      |      |      |      |      |      |      |      |      |      |      | Four Operating Rounds between Stock Rounds |      |      |      |      |      |      |      |      |      |       |  |  |  |
|-------|--------------------------|------|------|------|------|------|------|------|------|------|------|------|------|------|--|------|------|------|------|------|------|------|------|------|-------|--|--|--|
| 1/2   | 2/2                      | 3/2  | 4/6  | 5/3  | 6/4  | 7/3  | 8/5  | 9/9  | 10/2 | 12/2 | 13/2 | 14/1 | 15/- | 16/1 | 17/1                                       | 18/- | 19/2 | 20/2 | 21/1 | 22/- | 23/1 | 24/1 | 25/- | 26/2 | 27/1  |  |  |  |
| 28/-  | 29/1                     | 30/- | 31/1 | 32/1 | 33/1 | 34/1 | 35/- | 36/1 | 37/1 | 38/- | 39/1 | 40/1 | 41/- | 42/1 | 43/-                                       | 44/1 | 45/1 | 46/1 | 47/- | 48/- | 49/- | 50/- | 51/- | 60/- | 166/- |  |  |  |



Orders required for the following rounds

By the early deadline

OR24, OR25



**1830-S32**

With three out of four asking for a pause, we definitely pause.

**OR7**

| OR7  | Pres | Lay      | Run | Pay | Notes | Price | Credit | Trains |
|------|------|----------|-----|-----|-------|-------|--------|--------|
| NYNH | DS   | 25:F18:4 | 100 | No  | -     | 71F   | 560    | -      |
| Erie | WM   | 59:E11:2 | -   | -   | ① ② ③ | 90A   | 1      | 5 4    |
| B&O  | WM   | 61:I15:1 | 130 | Yes | ④     | 100E  | 23     | 5      |
| CPR  | JS   | 7:B18:1  | -   | -   | ⑤ ⑤ ⑥ | 82B   | 97     | 5      |
| NYC  | AR   | 63:E19:1 | 160 | Yes | ⑦     | 80F   | 41     | 4 4    |
| PRR  | JS   | 63:H16:1 | -   | -   | ⑧     | 69G   | 101    | 6      |
| B&M  | AR   | -        | 130 | Yes | -     | 69G   | 436    | 4      |
| C&O  | AR   | 8:G11:6  | -   | -   | ⑨     | 50I   | 0      | 6      |

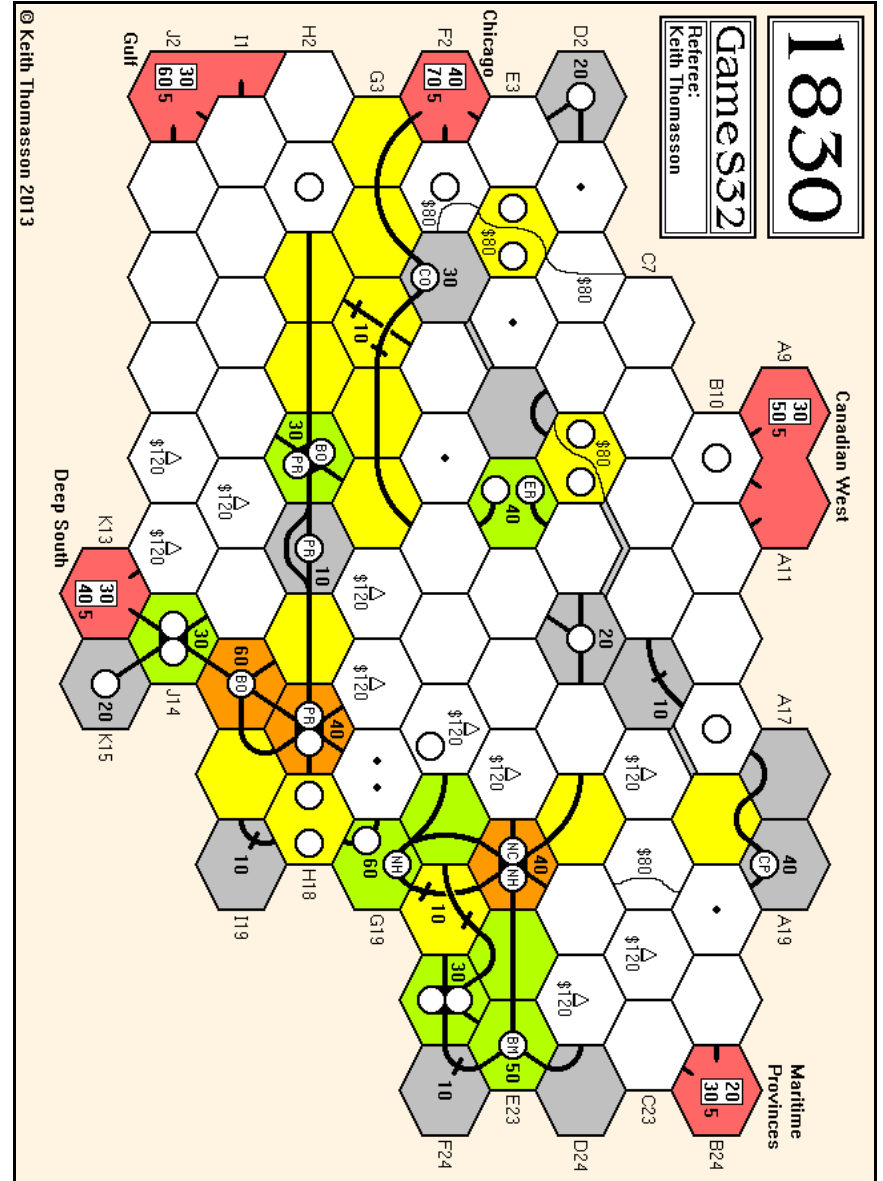
- Notes:
- ① 249 to the B&O for a '3' train
  - ② 750 to the bank for a '4' train and a '5' train
  - ③ Returns a '3' train to the bank
  - ④ 450 to the bank for a '5' train
  - ⑤ 80 to the bank for terrain costs
  - ⑥ 373 to the PRR for a '3' train
  - ⑦ 13 to the B&M for a '4' train
  - ⑧ 630 to the bank for a '6' train
  - ⑨ 630 to the bank for a '6' train, mostly funded by 401 from Adam, sells 3 NYNH (▼71F)

| Cash Flow    | b/f | OR7 | c/f | Value | %    | Certs |
|--------------|-----|-----|-----|-------|------|-------|
| Don Smith    | 231 | 38  | 269 | 795   | 18.9 | 6     |
| Adam Romoth  | 44  | 30  | 74  | 1,170 | 27.7 | 10-13 |
| Willem Moene | 30  | 65  | 95  | 1,185 | 28.1 | 9-10  |
| John Shelley | 2   | 52  | 34  | 1,068 | 25.3 | 11-12 |

| Portfolio    | B&M | B&O | C&O | CPR | Erie | NYC | NYNH | PRR |
|--------------|-----|-----|-----|-----|------|-----|------|-----|
| Don Smith    | -   | 1   | -   | -   | -    | -   | 6P   | -   |
| Adam Romoth  | 5P  | -   | 4P  | -   | -    | 6P  | 1    | -   |
| Willem Moene | -   | 5P  | 1   | -   | 6P   | -   | -    | -   |
| John Shelley | -   | -   | 1   | 5P  | -    | 2   | -    | 6P  |

|                          |  |      |                       |     |     |     |                 |     |
|--------------------------|--|------|-----------------------|-----|-----|-----|-----------------|-----|
| Bank (new)               | 2  | 1    | -                     | 4   | 4   | 2   | -               | 1   |
| Price (par)              | 67                                       | 100  | 71                    | 100 | 100 | 67  | 76              | 67  |
| Bank (pool)              | 3  | 3    | 4                     | 1   | -   | -   | 3               | 3   |
| Price (pool)             | 69G                                      | 100E | 50I                   | 82B | 90A | 80F | 71F             | 69G |
| Company credit           | 436                                      | 23   | 0                     | 97  | 1   | 41  | 560             | 101 |
| Tokens                   | 1  | 1    | 2                     | 3   | 2   | 3   | -               | 1   |
| Trains                   | 4  | 5    | 6                     | 5   | 5.4 | 4.4 | -               | 6   |
| Bank cash:               | 10,269                                   |      | Certificate limit: 16 |     |     |     | Trains: Diesels |     |
| Current operating order: | B&O, Erie, CPR, NYC, NYNH, PRR, B&M, C&O |      |                       |     |     |     |                 |     |

| Tiles |  | Tile number/Availability |      |      |      |      |      |      |      |      |      |      |      |      |  |  |
|-------|--|--------------------------|------|------|------|------|------|------|------|------|------|------|------|------|--|--|
|       |  | 1/1                      | 2/1  | 3/2  | 4/2  | 7/3  | 8/4  | 9/3  | 55/1 | 56/- | 57/4 | 58/2 | 69/- | 14/- |  |  |
|       |  | 15/-                     | 16/1 | 18/- | 19/1 | 20/1 | 23/3 | 24/3 | 25/1 | 26/1 | 27/1 | 28/1 | 29/1 | 53/- |  |  |
|       |  | 54/-                     | 59/2 | 39/1 | 40/1 | 41/2 | 42/2 | 43/2 | 44/1 | 45/2 | 46/2 | 47/1 | 61/2 | 62/1 |  |  |
|       |  | 63/3                     | 64/1 | 65/1 | 66/1 | 67/1 | 68/1 | 70/1 |      |      |      |      |      |      |  |  |



Orders required for the following rounds *By the early deadline*  
 OR8, SR6 *Adjudication can pause between rounds if requested*





**1856-E31**

Rob is still in front, but will he hang on until the end?

**OR15 - SR9**

There were some changes to the last round as originally published. The web version was updated and all players advised by email that this had happened. I am not convinced that everyone took this into account when writing their orders, but I am also not convinced that it actually made any real difference...

| OR15 | Pres | Lay      | Run | Pay | Notes | Price | Credit | Trains |
|------|------|----------|-----|-----|-------|-------|--------|--------|
| WR   | MF   | 14:J11:3 | 280 | Yes | -     | 300C▲ | 403    | 6      |
| GW   | AR   | -        | 240 | Yes | -     | 275C▲ | 713    | 5      |
| TGB  | RT   | 7:L5:2   | 290 | Yes | -     | 225A▲ | 409    | 5      |
| BBG  | JS   | 29:K12:4 | 650 | Yes | -     | 150B▲ | 135    | D      |
| CV   | JS   | 57:L9:3  | 290 | Yes | -     | 125E▲ | 591    | 5      |
| CGR  | MF   | -        | 660 | Yes | ①     | 125A▲ | 327    | D      |
| WGB  | DS   | -        | 140 | Yes | -     | 110A▲ | 260    | 6      |

Notes: ① 100 to the bank for a token in N17

Stock Round 9

| Don                      | Adam | Mark                         | John                    | Rob                      |
|--------------------------|------|------------------------------|-------------------------|--------------------------|
| + BBG new                | ✗    | - 2 BBG (▼110D)<br>+ WR pool | - 1 WR (↔)<br>+ WGB new | - 1 WR (↔)<br>+ BBG pool |
| + CV pool                | ✗    | + GW pool                    | ✗                       | - 1 WR (↔)<br>+ BBG pool |
| ✗                        | ✗    | ✗                            | ✗                       | ✗                        |
| <i>Priority for SR10</i> |      |                              |                         |                          |

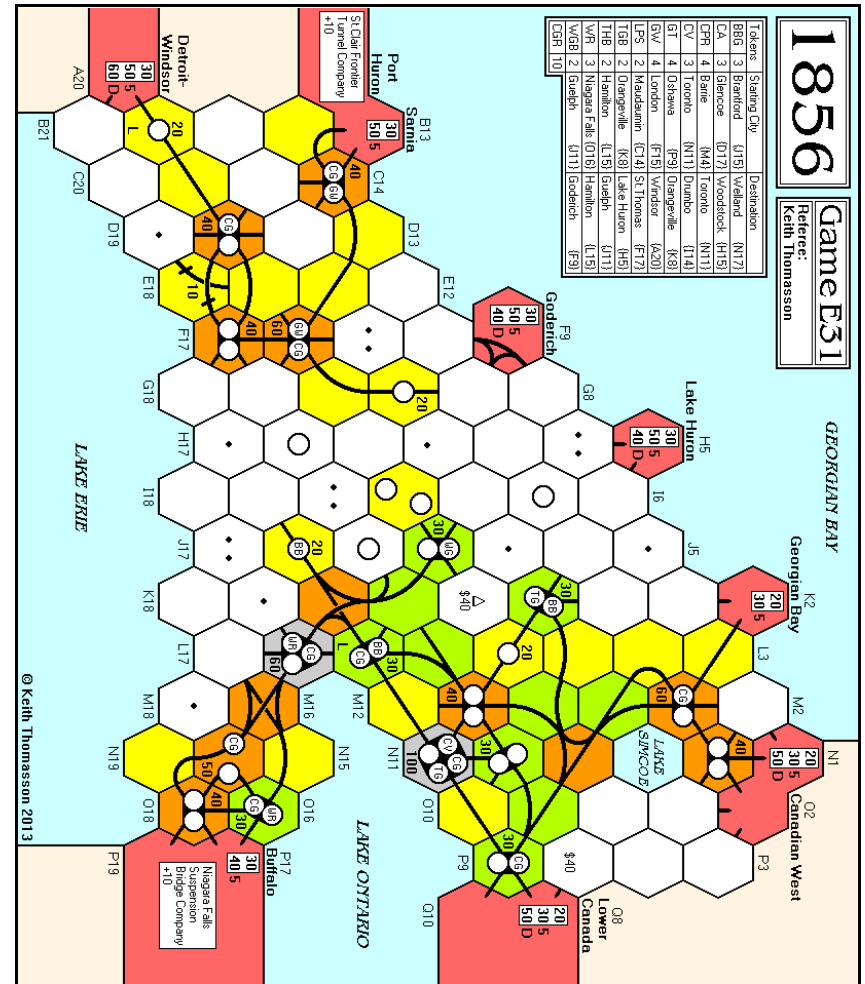
| Cash Flow     | b/f   | OR15 | SR9  | c/f   | Value | %     | Certs |
|---------------|-------|------|------|-------|-------|-------|-------|
| Adam Romoth   | 951   | 396  | 0    | 1,347 | 4,122 | 22.1▼ | 11    |
| Mark Frueh    | 980   | 567  | -275 | 1,272 | 4,472 | 23.9▲ | 10½   |
| John Shelley  | 1,859 | 592  | 200  | 2,651 | 4,261 | 22.8▼ | 11    |
| Rob Thomasson | 1,141 | 494  | 380  | 2,015 | 4,615 | 24.7▼ | 11    |
| Don Smith     | 287   | 117  | -225 | 179   | 1,214 | 6.5▲  | 7½    |

| Portfolio     | BBG | CV | GW | TGB | WGB | WR | CGR |
|---------------|-----|----|----|-----|-----|----|-----|
| Adam Romoth   | 1   | 1  | 5P | 4   | -   | -  | 2   |
| Mark Frueh    | -   | -  | 1  | -   | -   | 6P | 9P  |
| John Shelley  | 6P  | 6P | -  | -   | 1   | -  | -   |
| Rob Thomasson | 2   | -  | -  | 6P  | -   | -  | 8   |
| Don Smith     | 1   | 1  | -  | -   | 6P  | -  | 1   |

|                |      |      |      |      |      |      |      |
|----------------|------|------|------|------|------|------|------|
| Bank (new)     | -    | -    | -    | -    | 3    | -    | -    |
| Price (par)    | 100  | 90   | 70   | 100  | 100  | 75   | 100  |
| Bank (pool)    | -    | 2    | 4    | -    | -    | 4    | -    |
| Price (pool)   | 125C | 125E | 275C | 225A | 110A | 300C | 125A |
| Company credit | 135  | 591  | 713  | 409  | 260  | 403  | 327  |
| Tokens         | -    | 2    | 2    | -    | 1    | 1    | -    |
| Trains         | D    | 5    | 5    | 5    | 6    | 6    | D    |

Bank cash: 1,698      Certificate limit: 11      Trains: Diesels  
 Current operating order: WR, GW, TGB, CV, BBG, CGR, WGB

| Tiles | Tile number/Availability |      |       |       |      |      |      |       | Three Operating Rounds between Stock Rounds |       |       |       |  |  |  |  |  |  |
|-------|--------------------------|------|-------|-------|------|------|------|-------|---|-------|-------|-------|--|--|--|--|--|--|
| 1/1   | 2/1                      | 3/3  | 4/3   | 5/2   | 6/2  | 7/4  | 8/8  | 9/8   | 55/1  | 56/-  | 57/-  | 58/3  |  |  |  |  |  |  |
| 69/1  | 14/2                     | 15/- | 16/1  | 17/1  | 18/1 | 19/1 | 20/1 | 23/3  | 24/2  | 25/-  | 26/1  | 27/1  |  |  |  |  |  |  |
| 28/1  | 29/-                     | 59/2 | 120/1 | 121/2 | 59/1 | 40/1 | 41/3 | 42/2  | 43/2  | 44/1  | 45/2  | 46/1  |  |  |  |  |  |  |
| 47/1  | 63/2                     | 64/1 | 65/-  | 66/1  | 67/1 | 68/1 | 70/1 | 122/1 | 125/-                                       | 126/- | 127/- | 123/- |  |  |  |  |  |  |
| 124/- |                          |      |       |       |      |      |      |       |   |       |       |       |  |  |  |  |  |  |



Orders required for the following rounds *By the early deadline*  
 OR16, OR17, OR18



1861-E33

Three new minor companies are brought into play.

SR4

Stock Round 4

| Don       | Mike       | Lyndon     | Pete     | John             |
|-----------|------------|------------|----------|------------------|
| ✗         | 250 on E   | ✗          | ✗        | ✗                |
| 270 on E  | ✗          | ✗          | ✗        | ✗                |
| E for 270 | 220 on SV  | ✗          | ✗        | ✗                |
| ✗         | SV for 220 | 240 for MB | ✗        | ✗                |
| ✗         | ✗          | MB for 240 | + SW new | ✗                |
| ✗         | ✗          | ✗          | ✗        | Priority for SR5 |

| Cash Flow     | b/f | SR4  | c/f | Value | %    | Certs |
|---------------|-----|------|-----|-------|------|-------|
| Mike Hutton   | 252 | -220 | 32  | 797   | 21.4 | 6     |
| Lyndon Gurr   | 294 | -240 | 54  | 809   | 21.7 | 4     |
| Pete Campbell | 181 | -135 | 46  | 721   | 19.3 | 4     |
| John Shelley  | 84  | 0    | 84  | 789   | 21.1 | 4     |
| Don Smith     | 337 | -270 | 67  | 617   | 16.5 | 3     |

| Portfolio     | Privates | KK | KR | MNN | RO | SPW | E  | MB | SV | GRR | SW |
|---------------|----------|----|----|-----|----|-----|----|----|----|-----|----|
| Mike Hutton   | TSR WVR  | -  | -  | -   | 2D | 2D  | -  | -  | 2D | 1   | -  |
| Lyndon Gurr   | -        | 2D | 2D | -   | -  | -   | -  | 2D | -  | -   | 1  |
| Pete Campbell | -        | -  | -  | -   | -  | -   | -  | -  | -  | -   | 5D |
| John Shelley  | MRR      | -  | -  | -   | -  | -   | -  | -  | -  | 3D  | 1  |
| Don Smith     | MYR      | -  | -  | 2D  | -  | -   | 2D | -  | -  | -   | -  |

|                |      |     |      |     |     |      |      |      |      |      |   |
|----------------|------|-----|------|-----|-----|------|------|------|------|------|---|
| Bank (new)     | -    | -   | -    | -   | -   | -    | -    | -    | -    | 6    | 4 |
| Bank (pool)    | -    | -   | -    | -   | -   | -    | -    | -    | -    | -    | - |
| Price          | 100F | 90F | 110E | 70G | 60H | 135C | 120D | 110D | 165B | 135D |   |
| Company credit | 0    | 165 | 115  | 70  | -   | 270  | 240  | 220  | 380  | 397  |   |
| Loans          | -    | -   | -    | -   | -   | -    | -    | -    | -    | -    |   |
| Tokens         | -    | -   | -    | -   | -   | 1    | 1    | 1    | 1    | 1    |   |
| Trains         | 2    | 2   | 3    | 2   | 2   | 3    | -    | -    | 3    | 3    | 3 |
|                |      |     |      |     |     |      |      |      | 2    | 2    | 2 |

Bank cash: 12,860 Certificate limit: 13 Trains: 6 x 3', 4 x 4'...  
 Current operating order: E, MB, MNN, SV, KK, KR, RO, SPW, GRR, SW

Two Operating Rounds between Stock Rounds

| Tile  | Tile number/Availability |       |
|-------|--------------------------|-------|
| 5/2   | 4/4                      | 5/2   |
| 6/-   | 7/3                      | 8/3   |
| 9/3   | 57/1                     | 58/3  |
| 201/3 | 202/2                    | 621/2 |
| 14/2  | 15/2                     | 16/2  |
| 17/2  | 18/2                     | 19/2  |
| 20/2  | 21/2                     | 22/2  |
| 23/4  | 24/2                     | 25/4  |
| 26/2  | 27/2                     | 28/2  |
| 29/2  | 30/2                     | 31/2  |
| 87/2  | 88/-                     | 204/2 |
| 207/3 | 208/2                    | 619/2 |
| 622/2 | 624/1                    | 625/1 |
| 626/1 | 635/-                    | 637/- |

⊕ Yellow track tiles are unlimited

1861

Game E33

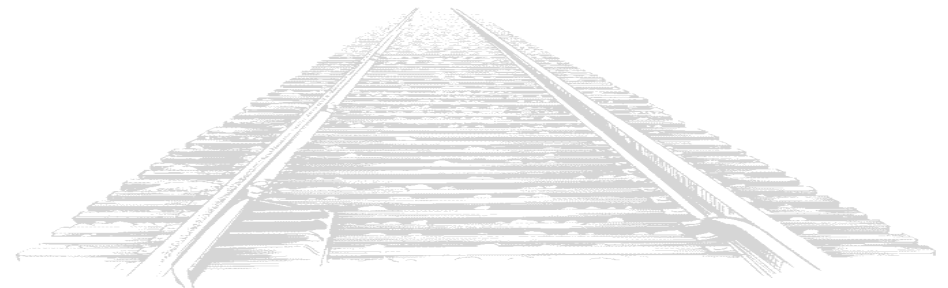
Referee: Keith Thomasson

- May start in phases 2 to 4
- May start in phases 3 to 4
- Russian State Railway

© Keith Thomasson 2013

Orders required for the following rounds By the early deadline

OR7, MR5





7 WONDERS I

Three more free cards.

ROUND 8

Age II - Card 2 The discard pile contains 7 Age I cards  
 Mike Reeves Walls (Pays Lyndon 2 for Stone)  
 Lyndon Gurr Wonder Stage 2  
 Jim Reader Forum (free due to West Trading Post)  
 Allan Stagg Courthouse (free due to Scriptorium)  
 Pete Campbell Library (free due to Scriptorium)  
 (John Boocock) Quarry (costs 1 coin)  
 Kevin Lee Vineyard (gains 9 coins)

| Mike         | Lyndon        | Jim          | Allan         | Pete        | (John)       | Kevin         |
|--------------|---------------|--------------|---------------|-------------|--------------|---------------|
| 0 coins/4 VP | 10 coins/8 VP | 1 coin/10 VP | 9 coins/20 VP | 1 coin/8 VP | 6 coins/5 VP | 17 coins/7 VP |
|              |               |              |               |             |              |               |
|              |               |              |               |             |              |               |
|              |               |              |               |             |              |               |
|              |               |              |               |             |              |               |
|              |               |              |               |             |              |               |
|              |               |              |               |             |              |               |
|              |               |              |               |             |              |               |
|              |               |              |               |             |              |               |
| Marketplace  | Tavern        | Trading Post | Tavern        | Marketplace |              |               |
|              |               |              |               |             |              |               |
| Trading Post | Baths         | Forum        | Courthouse    | Barracks    |              |               |
|              |               |              |               |             |              |               |
| Caravansery  | Stockade      | Altar        | Apothecary    | Apothecary  |              |               |
|              |               |              |               |             |              |               |
| Guard Tower  | Archery Range | Fawnshop     | Scriptorium   | Dispensary  | Tavern       | Vineyard      |
|              |               |              |               |             |              |               |
| Walls        | Barracks      | Workshop     | Scriptorium   | Altar       |              |               |
|              |               |              |               |             |              |               |
|              |               | Laboratory   | Library       | Theatre     |              |               |
| 1            | -1            | 2            | -2            | 2           | -1           | -1            |

Orders required Age II cards are passed to the right

Your third card for Age II, to play, build a Wonder stage or discard for 3 coins



ACQUIRE 59

Looking for a merger?  
You won't find one here.

ROUND 7

Michael 12-G Buys 3 Festival @ 300.  
 John 5-H Buys 3 Continental @ 400.  
 Tony 11-G No purchases.  
 Colin 5-F No purchases.  
 Lyndon 6-H Buys 3 Continental @ 400.  
 Michael 5-C Buys 3 Festival @ 600.

|     |     |     |     |     |     |     |     |     |      |      |      |      |
|-----|-----|-----|-----|-----|-----|-----|-----|-----|------|------|------|------|
| 1-A | 2-A | 3-A | I   | I   | I   | 7-A | 8-A | 9-A | 10-A | 11-A |      |      |
| 1-B | 2-B | I   | I   | I   |     | 6-B |     | 8-B | 9-B  | C    | C    | 12-B |
| 1-C | I   | I   | I   | I   |     | 6-C | 7-C | 8-C | 9-C  | 10-C | 11-C | 12-C |
| 1-D | I   | 3-D | I   |     | 5-D | 6-D | 7-D | 8-D | 9-D  | 10-D | T    | T    |
| 1-E | 2-E |     | 4-E | A   |     | 6-E | W   | W   | 9-E  | 10-E | T    | T    |
| 1-F |     | 3-F | A   | A   |     | 6-F | 7-F | W   | 9-F  | 10-F | T    | T    |
| 1-G | 2-G | A   | A   |     | 5-G | F   | 7-G | 8-G | L    | 10-G | T    | T    |
| 1-H | A   | A   | 4-H | F   | F   |     | 7-H | L   | L    | 10-H | 11-H | 12-H |
| 1-I | A   | A   | 4-I | 5-I | F   | F   | 8-I | 9-I | 10-I | 11-I |      |      |

|                   | Lux | Tow | Ame | Fes | Wor | Con | Imp | Cash  | Value  |
|-------------------|-----|-----|-----|-----|-----|-----|-----|-------|--------|
| Lyndon Gurr       | 8   | -   | -   | -   | 8   | 11  | -   | 1,100 | 20,600 |
| Michael Graystone | 13  | -   | -   | 13  | -   | 2   | -   | -     | 21,500 |
| John Colledge     | -   | 4   | 9   | -   | 1   | 6   | 3   | 1,700 | 34,400 |
| Tony Wilcock      | -   | -   | 3   | -   | -   | -   | 4   | 3,900 | 18,600 |
| Colin Sharpe      | -   | 5   | 7   | 4   | -   | 1   | 1   | -     | 24,100 |
| Bank Stock        | 4   | 16  | 6   | 8   | 16  | 5   | 17  |       |        |
| Chain Size        | 3   | 8   | 9   | 5   | 3   | 2   | 12  |       |        |
| Chain Value       | 300 | 600 | 700 | 600 | 400 | 400 | 900 |       |        |

Playing sequence

John, Tony, Colin, Michael, John again







**BATTLE! 5**

Your Attribute research order is:  
AMECSBDRPHX

**ROUND 9**

Apologies to the players for the errors I made last time. The web version was updated to show the correct position and the affected player notified. Frustratingly, it seems obvious that some people ignored (or missed) the update notice and worked from zine after all. If you need to be sure where we are starting from for this round, that is the best source to refer to.

Research: *Frogs* researches Defence, *Effalump* researches Range, while *Banzai* and *Dream Team* research Power.

New units: 1A {F}, 7F {D}. I re-use older numbers when they become available.

Moves: A little bit of shuffling, with *Frogs* pulling back into a defensive line. 3C uses Elite (g) to slip past 2B on its way to the double-power hex. 4A cannot move - (a) it has no move skills, and (b) it is locked in place against 5B.

Combat: With only two enemy units adjacent to each other, this is much simpler. Only one local and one ranged attack takes place.  
4A⇒5B (4 hits \*), 3C⇒2B (6 hits \*) (\* = destroyed)

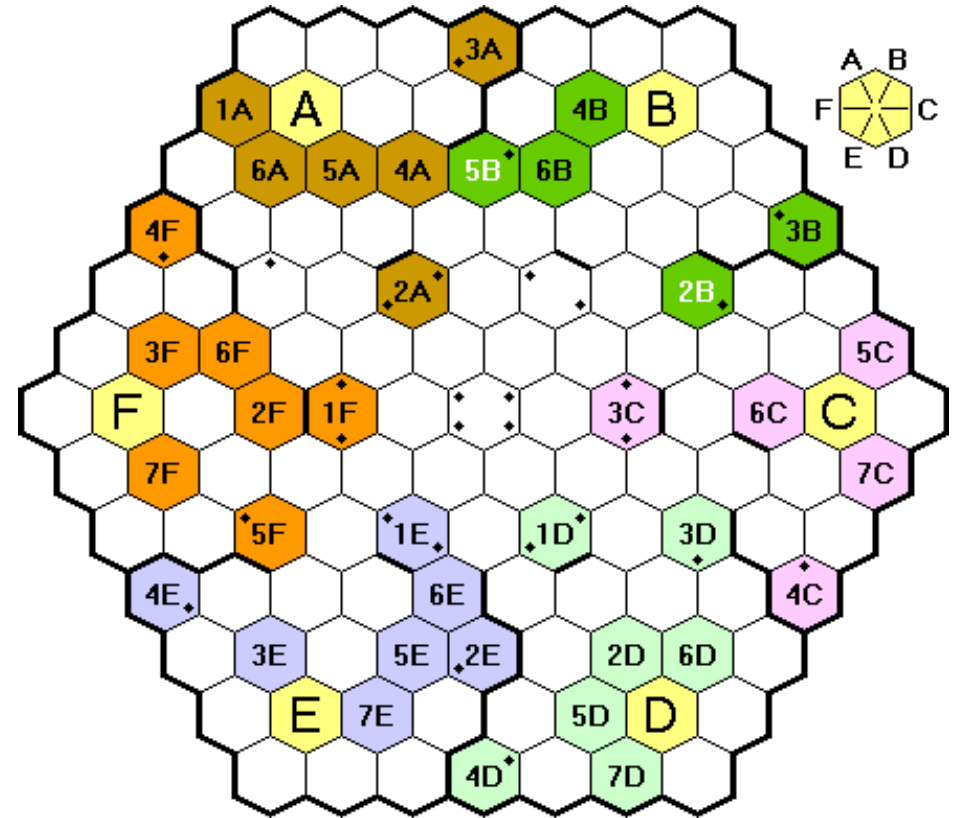
Conversions: None.

Builds: 6C builds a wall {E}, 2E builds a wall {B}.

I took this one slow and double-checked quite a bit, so I shall be disappointed if I have moved units in the wrong direction or missed other obvious things.

| Team                             | Research          | PP | Units | A | M | E | C | S   | B | D | R | P | H |  |  |
|----------------------------------|-------------------|----|-------|---|---|---|---|-----|---|---|---|---|---|--|--|
| <i>Apache</i><br>Pete Campbell   | ✗<br>Level 6      | 14 | 1A    |   |   |   |   |     |   |   |   |   |   |  |  |
|                                  |                   |    | ◆◆2A  | 2 | 2 |   |   |     |   |   |   |   |   |  |  |
|                                  |                   |    | ◆3A   | 1 | 2 |   |   |     |   |   |   |   |   |  |  |
|                                  |                   |    | 4A    | 2 |   |   |   |     |   |   |   |   |   |  |  |
|                                  |                   |    | 5A    | 3 | 2 | 0 | 0 | 2/0 |   |   |   |   |   |  |  |
|                                  |                   |    | 6A    | 3 | 1 | 1 |   |     |   |   |   |   |   |  |  |
| <i>Banzai</i><br>Mark Stretch    | +Power<br>Level 9 | 11 | ◆5B   | 1 | 1 |   |   |     |   |   |   |   |   |  |  |
|                                  |                   |    | 4B    | 2 | 2 |   |   |     |   |   |   |   |   |  |  |
|                                  |                   |    | 6B    | 2 | 2 |   |   |     |   |   |   |   |   |  |  |
| <i>Conflux</i><br>Steve Ham      | ✗<br>Level 8      | 13 | ◆◆3C  | 3 | 3 | 1 | 0 | 0/0 | 0 | 0 | 1 |   |   |  |  |
|                                  |                   |    | ◆4C   | 0 | 2 |   |   |     |   |   |   |   |   |  |  |
|                                  |                   |    | 5C    |   |   |   |   |     |   |   |   |   |   |  |  |
|                                  |                   |    | 6C    | 2 | 1 | 0 | 0 | 1/0 | 1 | 0 | 1 |   |   |  |  |
|                                  |                   |    | 7C    | 0 | 1 |   |   |     |   |   |   |   |   |  |  |
| <i>Dream Team</i><br>Allan Stagg | +Power<br>Level 9 | 15 | ◆◆1D  | 0 | 1 |   |   |     |   |   |   |   |   |  |  |
|                                  |                   |    | 2D    | 3 | 3 | 1 | 0 | 0/0 | 0 | 1 | 1 |   |   |  |  |
|                                  |                   |    | ◆3D   | 1 | 2 |   |   |     |   |   |   |   |   |  |  |
|                                  |                   |    | ◆4D   | 0 | 2 |   |   |     |   |   |   |   |   |  |  |
|                                  |                   |    | 5D    | 0 | 2 | 0 | 0 | 0/0 | 0 | 1 |   |   |   |  |  |
|                                  |                   |    | 6D    | 0 | 1 |   |   |     |   |   |   |   |   |  |  |
|                                  |                   |    | 7D    | 0 | 1 |   |   |     |   |   |   |   |   |  |  |

| Team                            | Research            | PP | Units | A | M | E | C | S   | B | D | R | P | H |  |
|---------------------------------|---------------------|----|-------|---|---|---|---|-----|---|---|---|---|---|--|
| <i>Effalump</i><br>Marcus Pratt | +Range<br>Level 8   | 15 | ◆◆1E  | 2 | 2 |   |   |     |   |   |   |   |   |  |
|                                 |                     |    | ◆2E   | 2 | 2 | 0 | 0 | 1/0 | 1 |   |   |   |   |  |
|                                 |                     |    | 3E    | 2 | 1 | 2 | 1 | 1/0 | 1 | 1 |   |   |   |  |
|                                 |                     |    | ◆4E   | 0 | 2 |   |   |     |   |   |   |   |   |  |
|                                 |                     |    | 5E    | 0 | 1 | 0 | 0 | 1/0 |   |   |   |   |   |  |
|                                 |                     |    | 6E    | 2 | 2 | 1 | 1 | 1/2 | 1 |   |   |   |   |  |
|                                 |                     |    | 7E    | 2 | 2 | 1 | 0 | 1/2 | 1 |   |   |   |   |  |
| <i>Frogs</i><br>John Marsden    | +Defence<br>Level 7 | 15 | ◆◆1F  | 1 | 2 |   |   |     |   |   |   |   |   |  |
|                                 |                     |    | 2F    | 0 | 1 | 1 | 0 | 1/0 | 1 |   |   |   |   |  |
|                                 |                     |    | 3F    | 2 | 1 | 1 | 1 | 2/2 | 2 |   |   |   |   |  |
|                                 |                     |    | ◆4F   | 0 | 1 |   |   |     |   |   |   |   |   |  |
|                                 |                     |    | ◆5F   | 3 | 2 | 1 | 1 |     |   |   |   |   |   |  |
|                                 |                     |    | 6F    | 0 | 1 |   |   |     |   |   |   |   |   |  |
|                                 |                     |    | 7F    | 1 | 1 | 1 |   |     |   |   |   |   |   |  |



Orders required: Attribute order: AMECSBDRPHX  
Production, Moves and Combat for round ten



**BUS BOSS 331-SCT**

A close contest.

**GAME OVER**

|     |                 |      |     |
|-----|-----------------|------|-----|
| 1st | Mark Stretch    | OMR  | 321 |
| 2nd | Pete Campbell   | SCAM | 315 |
| 3rd | Jim Reader      | BUM  | 298 |
| 4th | Roger Trethewey | SLOB | 264 |
| 5th | Don Shailer     | TABS | 234 |

**Pete Campbell (SCAM, 2nd):** I thought it was an interesting map. A lot of competition in the middle with scope for monopolies around the edges. I missed the opportunity to link to Aberdeen early on, which probably affected my chances, but other than that I was happy with my network. Congrats to Mark and thanks to Keith for running it.

**Jim Reader (BUM, 3rd):** As Keith mentioned, I really managed to mess this game up. I think it was turn 8, I very deliberately and carefully counted the number of turns I had left so I could build the three remaining west coast monopolies and got it hopelessly wrong. I worked out I had enough turns left that I could still build these and connect to Fraserburgh, so I took the Fraserburgh connection. Of course, I then ran out of turns to build to Mallaig, Oban and the Kyle of Lochalsh and had to make a choice between them. It's hard to know how much this actually cost, as I did gain points from having this connection, but missed out on a certain 60 points (minus some payments) for not building the third monopoly. I suspect that this cost me the game, which is especially frustrating given how hard I had worked in the building stages to secure the west coast monopoly and routes south. All I can say is "##\$^!" and a muttered congratulations to Mark for taking full advantage of my cockup. Thanks also to Keith for running the game.

**Roger Trethewey (SLOB, 4th):** Congratulations to Mark, in the lead all the way. My favourite to win had been Jim having cornered the whole of the northwest. I spent too much time messing about in the middle. It was a good game made better knowing a lot of the places on the map having spent many holidays in Scotland. Thanks Keith for running the game.

This map is one of the few that offers good chances of locking your opponents out of an area, and Jim did that very well. Shame about the planning... As I said, I made the same mistake when I was looking ahead to see how likely he was to make it work.



**BUS BOSS 333-CRO**

Peckham joins the network to make it a full house.

**ROUND 10**

Croydon

Round 10 Runs

|    |  |   | BRACE:      | CAR            | GRUB     | TEAR        | BUM            |                        |
|----|--|---|-------------|----------------|----------|-------------|----------------|------------------------|
| 27 | 8♣ Wimbledon & Merton<br>5♦ Peter Pan Pool | ① BRACE 30<br>✗ BUM                                       | +3          |                |          |             | -3             | 27<br>3                |
| 28 | A♦ Croydon<br>6♣ Streatham Hill            | ① GRUBBY 11<br>① CAR 10<br>③ BUM 5<br>③ TEAR 4<br>✗ BRACE | -2          | +3             | -3       |             | +2             | 14<br>7<br>3<br>4<br>2 |
| 29 | A♥ Shopping Malls<br>J♠ Shirley Park       | ① BRACE 30  |             |                |          |             |                | 30                     |
| 30 | 4♦ Catford<br>9♥ Woodcote                  | ① TEAR 16<br>② BRACE 7<br>② BUM 7<br>✗ GRUBBY             | +2/-6<br>+5 |                | -3<br>-5 | +2/-3<br>+3 | +3/-2<br>+6/-2 | 14<br>6<br>2<br>8      |
| 31 | 3♦ Lewisham<br>9♠ Coney Hall               | ① BRACE 20<br>② TEAR 10                                   | +2          |                |          | -2          |                | 18<br>12               |
| 32 | 10♦ Beckenham<br>3♥ Coulsdon               | ① BUM 20<br>② CAR 10<br>✗ BRACE<br>✗ GRUBBY               | -7<br>-3    | +3<br>+4       | -4       |             | +7             | 13<br>3<br>10<br>4     |
| 33 | K♠ Central Croydon<br>10♣ Streatham Common | ① TEAR 13<br>② CAR 7<br>② BUM 6<br>④ GRUBBY 4             |             |                | -3       |             | +3             | 13<br>7<br>3<br>7      |
| 34 | 2♣ Dulwich<br>4♥ Mitcham                   | ① CAR 15<br>① GRUBBY 15<br>✗ BRACE                        | -3<br>-5    | +3             | +5       |             |                | 12<br>10<br>8          |
| 35 | K♥ Thornton Heath Pond<br>6♦ Bell Green    | ① CAR 13<br>① TEAR 12<br>③ BRACE 5                        | +5/-4<br>+2 | +2/-3<br>+4/-5 |          | +3/-2<br>-2 |                | 15<br>13<br>2          |

Round 10 Routes

Graystone Relies on Ugly Brown Buses Yet-again (GRUBBY) (Michael Graystone, Brown)  
None.

Croydon Access Routes (CAR) (Bob Coull, Black)  
None.

Bus Routes Across Croydon Eventually (BRACE) (Pete Campbell, Blue)  
Dulwich - Peckham (5)

Bloody Useless Management (BUM) (Jim Reader, Yellow)  
None.

Tooting Enterprises Are Rampant (TEAR) (Kevin Lee, Green)  
Morden - Carshalton (8)

|        | Runs: | 27 | 28 | 29 | 30 | 31 | 32 | 33 | 34 | 35 | Routes | Score |
|--------|-------|----|----|----|----|----|----|----|----|----|--------|-------|
| BRACE  | 156   | 27 | 2  | 30 | 6  | 18 | 10 | -  | 8  | 2  | -5     | 254   |
| TEAR   | 199   | -  | 4  | -  | 14 | 12 | -  | 13 | -  | 13 | -8     | 247   |
| CAR    | 152   | -  | 7  | -  | -  | -  | 3  | 7  | 12 | 15 | -      | 196   |
| BUM    | 169   | 3  | 3  | -  | 2  | -  | 13 | 3  | -  | -  | -      | 193   |
| GRUBBY | 125   | -  | 14 | -  | 8  | -  | 4  | 7  | 10 | -  | -      | 168   |

Round 11 Runs

|     |          |                               |
|-----|----------|-------------------------------|
| 21. | K♠ - 5♣  | Central Croydon to Peckham    |
| 36. | Q♥ - K♣  | Morden to Thornton Heath      |
| 37. | 7♣ - J♦  | Tooting to Woodside           |
| 38. | 8♥ - 9♣  | Wallington to Colliers Wood   |
| 39. | 8♦ - 2♠  | Hayes to Whyteleafe           |
| 40. | 6♠ - 6♥  | Forestdale to South Croydon   |
| 41. | 7♥ - 10♠ | South Croydon to West Wickham |
| 42. | 5♥ - J♣  | Purley to Crystal Palace      |
| 43. | 5♠ - 7♠  | Tulse Hill to New Addington   |
| 44. | A♠ - K♦  | Gatwick Link to West Croydon  |

| Runs          | Routes  |
|---------------|---|
| Enter up to 5 | Buy in the order Michael, Jim, Bob, Kevin, Pete |



**BUS BOSS 335-GMY**

Slim pickings for most, but BAG had it in the bag.

**ROUND 7**

Germany

Round 7 Runs

|   |                        | BAG   | ODE | BUS | HUN | GBR |    |
|---|------------------------|-------|-----|-----|-----|-----|----|
| 1 | 7♥ Kassel              | ① HUN | 20  |     |     |     | 20 |
|   | 6♦ Hamburg             | ② BAG | 10  |     |     |     | 10 |
| 3 | 2♥ Duisburg            | ① BAG | 30  | -4  |     |     | 26 |
|   | 3♠ Freiburg            | ✗ ODE |     | +4  |     |     | 4  |
| 4 | Q♥ Mainz<br>K♣ Gorlitz | ① BAG | 30  |     |     |     | 30 |
| 5 | 7♣ Magdeburg           | ① BUS | 15  |     | +4  |     | 19 |
|   | J♦ Osnabrück           | ① HUN | 15  |     | -4  |     | 11 |
| 6 | Q♣ Dresden             | ① BAG | 20  |     |     |     | 20 |
|   | 8♥ Bonn                | ② BUS | 10  |     |     | -4  | 6  |
|   | ✗ GBR                  |       |     | +4  |     |     | 4  |
| 7 | J♥ Frankfurt           | ① BAG | 16  |     | +5  |     | 21 |
|   | 9♠ Leipzig             | ② ODE | 9   |     | +5  | -3  | 11 |
|   | ③ BUS                  | 5     | -5  | -5  |     |     | -5 |
|   | ✗ HUN                  |       | +3  |     |     |     | 3  |
| 8 | K♠ Czechoslovakia      | ① BUS | 20  | +2  |     |     | 22 |
|   | 3♣ Berlin              | ② ODE | 10  | -4  | -2  |     | 4  |
|   | ✗ BAG                  |       | +4  |     |     |     | 4  |

Round 7 Routes

Buses Around Germany (BAG) (Bob Coull, Green)  
Erfurt - Nürnberg, Gorlitz - Poland (12)

Over Deutschland Express (ODE) (John Marsden, Yellow)  
Berlin - Stralsund (10)

Hamburg Upper Network (HUN) (Colin Sharpe, Red)  
Hamburg - Lübeck - Rostock (10)

German Buses Rule (GBR) (Roger Trethewey, Blue)  
Osnabrück - Wilhelmshaven, Dortmund - Essen (11)

Busreisen Überall Schnell (BUS) (Mike Reeves, Black)  
Flensburg - Denmark, Magdeburg - Erfurt (11)

|     | Runs: | 1  | 3  | 4  | 5  | 6  | 7  | 8  | Routes | Score |
|-----|-------|----|----|----|----|----|----|----|--------|-------|
| BAG | 27    | -  | 26 | 30 | -  | 20 | 21 | 4  | -12    | 116   |
| BUS | 32    | 10 | -  | -  | 19 | 6  | -5 | 22 | -11    | 73    |
| HUN | 30    | 20 | -  | -  | 11 | -  | 3  | -  | -10    | 54    |
| ODE | 28    | -  | 4  | -  | -  | -  | 11 | 4  | -10    | 37    |
| GBR | 31    | -  | -  | -  | -  | 4  | -  | -  | -11    | 24    |

Round 8 Runs

|     |           |                           |
|-----|-----------|---------------------------|
| 2.  | 3♥ - 7♦   | Essen to Wilhelmshaven    |
| 9.  | 8♠ - 5♣   | München to Stralsund      |
| 10. | 2♦ - A♣   | Flensburg to Poland       |
| 11. | 9♠ - 4♥   | München to Dortmund       |
| 12. | 10♦ - 10♥ | Hannover to Trier         |
| 13. | K♦ - 7♠   | Belgium to Augsburg       |
| 14. | A♠ - Q♦   | Mannheim to Netherlands   |
| 15. | 2♠ - 6♥   | Karlsruhe to Köln         |
| 16. | 5♥ - J♠   | Dusseldorf to Switzerland |
| 17. | 10♣ - 4♦  | Plauen to Lübeck          |
| 18. | 2♣ - 9♦   | Berlin to Braunschweig    |

| Runs          | Routes   |
|---------------|--|
| Enter up to 5 | Buy in the order Roger, John, Colin, Mike, Bob |





**HOMESTEADERS I**

Pipped at the post.

**ROUND 10**

Worker Allocation

Howard 5 Homestead (W) Farm (T\$\$) Foundry (S) Ranch (L) Copper Mine (C)  
 Rob 3 Homestead (W) Market (\$\$) Gold Mine (G)  
 Michael 5 Homestead (W) (VP) Market (\$\$) Farm (T\$\$) Farm (F)

Income and Payroll

Howard Gains \$15 W T S C L Trade TS for \$\$\$+VP  
 Pays \$5 for 5 workers  
 Rob Gains \$8 W T G VP VP VP VP Pays \$3 for 3 workers  
 Michael Gains \$9 T T F VP Pays \$5 for 5 workers

Auctions Auction 1 (Any) : Auction 2 (I or C)

|                   |                  |                                       |
|-------------------|------------------|---------------------------------------|
| Howard            | Rob              | Michael                               |
| \$16 on Auction 1 | \$3 on Auction 2 | Pass to Railroad Track<br>Takes 3 VPs |

Building

Howard Takes 2 debt tokens, trades T\$ for W, build the Town Hall, sells L for 4 VPs.  
 Rob Trades TG for L, builds the Restaurant.

|                 | Resources |     |   |   |   |   |   |   | Debt | T  | Inc | VPs | RT     |
|-----------------|-----------|-----|---|---|---|---|---|---|------|----|-----|-----|--------|
|                 | \$        | Wrk | W | F | S | G | C | L |      |    |     |     |        |
| Rob Thomasson   | 8         | 3   | 2 | - | - | 1 | - | - | 1    | 1  | 2   | 45  | Any/+3 |
| Michael Longdin | 11        | 5   | 4 | 1 | - | - | - | - | -    | 11 | 1   | 24  | Any/+3 |
| Howard Bishop   | -         | 5   | - | - | - | - | - | - | 2    | -  | 4   | 49  | Any    |

Howard pulls is out of the bag at the end. I have to admit that the spreadsheet was not adding the correct amounts for end-of-game bonuses,, but this was having a relatively even effect for everyone. In the end the deciding factor was Howard going all out for the Town Hall, which was also Rob's first choice of building. The Rail Yard was another major contributor to his total.

|     |                 |    |
|-----|-----------------|----|
| 1st | Howard Bishop   | 49 |
| 2nd | Rob Thomasson   | 45 |
| 3rd | Michael Longdin | 24 |

So congratulations to Howard, while I thought Rob had it sewn up. We'll do the final round-up next time if you would care to share your thoughts on the game.



**RAILWAY RIVALS 2194-MN**

BUM is reeled in -  
by another 2 points...

**ROUND 11**

Minnesota

Round 11 Runs

|    |   |  | GREAT | HEART          | FEAR | MARS           | BUM            |                    |
|----|---|--|-------|----------------|------|----------------|----------------|--------------------|
| 29 | 21 Fairbault/Red Wing<br>42 St.Cloud                          | ① BUM 16<br>② GREAT 9<br>③ FEAR 5              | +2/-1 |                |      |                |                | 17<br>8<br>5       |
| 30 | 32 Pipestone/<br>Worthington<br>65 Forest Center/<br>Virginia | ① HEART 13<br>② MARS 7<br>② BUM 6<br>④ GREAT 4 | -2    | +1<br>-1<br>+2 |      | -1<br>-1       | +1<br>+1       | 11<br>9<br>4<br>6  |
| 31 | 22 Rochester<br>31 Sioux Falls                                | ① GREAT 20<br>② MARS 10<br>✗ HEART<br>✗ BUM    |       | -2             |      | +2<br>+1       |                | 20<br>7<br>2<br>1  |
| 32 | 44 Duluth<br>☉4 North Dakota                                  | ① BUM 16<br>② HEART 9<br>③ MARS 5              |       | -1             |      | +1             |                | 16<br>10<br>4      |
| 33 | 62 Noyes/Warroad<br>14 St.Paul                                | ① MARS 20<br>② FEAR 10<br>✗ GREAT              | -1    |                |      | +1             |                | 20<br>9<br>1       |
| 34 | 56 Grand Forks<br>16 Anoka/Hopkins                            | ① GREAT 16<br>② FEAR 9<br>③ HEART 5<br>✗ MARS  | +3    | +1             |      | -3<br>-1<br>+1 |                | 13<br>12<br>4<br>1 |
| 35 | 55 Bemidji<br>☉3 South Dakota                                 | ① BUM 20<br>② HEART 10<br>✗ MARS<br>✗ GREAT    |       | -3             | -3   |                | -6<br>+3<br>+6 | 11<br>10<br>6<br>3 |

Routes

Graystone Railways Entertain Another Territory (GREAT) (Michael Graystone, Brown)  
None.

Ham's Engines Are Rubbish Timberwolves (HEART) (Steve Ham, Purple)  
None.

Fairmont Railways Are Rampant (FEAR) (Kevin Lee, Red)  
None.

Making Alternative Routes Superior (MARS) (John Marsden, Green)  
None.

Bloody Useless Management (BUM) (Jim Reader, Yellow)  
None.

Scores

|       | Runs: | 29 | 30 | 31 | 32 | 33 | 34 | 35 | Builds | Score |
|-------|-------|----|----|----|----|----|----|----|--------|-------|
| BUM   | 227   | 17 | 4  | 1  | 16 | -  | -  | 11 | -      | 276   |
| GREAT | 199   | 8  | 6  | 20 | -  | 1  | 13 | 3  | -      | 250   |
| MARS  | 190   | -  | 9  | 7  | 4  | 20 | 1  | 6  | -      | 237   |
| FEAR  | 187   | 5  | -  | -  | -  | 9  | 12 | -  | -      | 213   |
| HEART | 152   | -  | 11 | 2  | 10 | -  | 4  | 10 | -      | 189   |

Round 12 Runs

|     |         |   |
|-----|---------|---|
| 36. | 54 - 15 | Granite Falls/New Ulm to St.Paul              |
| 37. | 26 - 63 | Mankato to Hibbing                            |
| 38. | 12 - 46 | Minneapolis to Superior                       |
| 39. | 23 - 66 | Winona to Lake Superior ports                 |
| 40. | 54 - 41 | Fargo to Brainerd/Sauk Center                 |
| 41. | 52 - 66 | Cass Lake/Moorhead to Ely/International Falls |
| 42. | 33 - 61 | Fairmont/Marshall to Wisconsin                |

|               |
|---------------|
| Runs          |
| Enter up to 4 |

ZINES RECEIVED

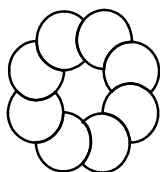
A summary of zines that I've received recently.

| Date   | Zine/Issue                        |
|--------|-----------------------------------|
| Jan 18 | ...mais n'est-ce pas la gare? 138 |
| Jan 25 | Minstrel 367                      |

RATINGS

This is the list of subscribers with a rating of 2 or more. People are included if they have completed five or more games.

|                     | Rating | The rating system is:   |
|---------------------|--------|---|
| ▼ Lyndon Gurr       | 3.338  | The rating system is:<br>5 points for a win<br>3 points for second<br>1 point for third |
| ▼ Pete Campbell     | 3.063  |   |
| - Marcus Pratt      | 2.911  |   |
| - Mark Frueh        | 2.800  |   |
| ▼ Lionel Robbins    | 2.708  |   |
| - Steve Thomas      | 2.611  |   |
| - Michael Graystone | 2.340  |   |
| - Tony Robbins      | 2.318  |   |
| ▲ Rob Thomasson     | 2.268  |   |
| - Bob Coull         | 2.053  |   |



RAILWAY RIVALS 2205-M

Apologies, run 14 was not available.

ROUND 8

London & Midlands

Round 8 Runs

|    |                                   | BALL    | ODE | BUM   | DRAB | COLIN |     |    |
|----|-----------------------------------|---------|-----|-------|------|-------|-----|----|
| 8  | 25 Windsor<br>51 Birmingham       | ① BALL  | 10  |       | +5   |       | 15  |    |
|    |                                   | ① COLIN | 10  |       |      |       | 10  |    |
|    |                                   | ① BUM   | 10  | -5    |      |       | 5   |    |
| 9  | 52 Birmingham<br>35 Peterborough  | ① COLIN | 13  |       |      | -10   | 3   |    |
|    |                                   | ① BALL  | 12  |       |      | +1/-8 | 5   |    |
|    |                                   | ③ DRAB  | 5   | +8/-1 |      |       | +10 | 22 |
| 10 | 44 Coventry<br>23 Luton           | ① BUM   | 16  | -1    |      |       | +1  | 16 |
|    |                                   | ② BALL  | 7   |       | +1   |       | +2  | 10 |
|    |                                   | ② COLIN | 7   | -2    | -1   |       |     | 4  |
| 11 | 65 Newark<br>4 East Anglia        | ① ODE   | 30  |       |      |       |     | 30 |
| 12 | 51 Cambridge<br>43 Leamington Spa | ① ODE   | 20  |       | -5   |       | +8  | 23 |
|    |                                   | ② COLIN | 10  |       | -8   |       |     | 2  |
|    |                                   | ✗ BUM   |     |       | +5   |       |     | 5  |
| 13 | 12 London<br>62 Loughborough      | ① BUM   | 13  |       |      |       |     | 13 |
|    |                                   | ② BALL  | 8   |       | +4   |       | +3  | 15 |
|    |                                   | ③ DRAB  | 5   | -3    |      |       |     | 2  |
|    |                                   | ③ ODE   | 4   | -4    |      |       |     | 0  |

Routes

Birmingham and London Link (BALL) (Bob Coull, Black)

C61 - I61 - J64, B31 - Walsall, B31 - A30.

-10 (builds) +3/-1 (ODE) -1 (BUM) +2/-1 (DRAB) = -8

One Dark Engine (ODE) (John Marsden, Green)

Oxford - B13 - A12, D46 - C46 - B46 - A46, I6 - K5 - L6 - M5, J18 - K18.

-10 (builds) +1/-3 (BALL) -3 (COLIN) = -15

Bloody Useless Management (BUM) (Jim Reader, Yellow)

Stratford Upon Avon - A21, C9 - C6 - Reading, L15 - J14 - J13 - I12.

-10 (builds) +1 (BALL) -1 (COLIN) = -10

Don's Railways Across Britain (DRAB) (Don Shailer, Orange)

G45 - Hertford, M30 - N31 - A70 - B71, L31 - I29 - I27, A70 - Loughborough.

-10 (builds) +1/-2 (BALL) = -11

Coventry, Oxford, London Internal Network (COLIN) (Colin Sharpe, Blue)

B23 - A22, Reading - C4 - A5, E31 - Walsall.

-6 (builds) +3 (ODE) +1 (BUM) = -2

Scores

|       | Runs: | 8  | 9  | 10 | 11 | 12 | 13 | Builds | Score |
|-------|-------|----|----|----|----|----|----|--------|-------|
| BALL  | 111   | 15 | 5  | 10 | -  | -  | 15 | -8     | 148   |
| ODE   | 85    | -  | -  | -  | 30 | 23 | 0  | -15    | 123   |
| COLIN | 103   | 10 | 3  | 4  | -  | 2  | -  | -2     | 120   |
| BUM   | 70    | 5  | -  | 16 | -  | 5  | 13 | -10    | 99    |
| DRAB  | 69    | -  | 22 | -  | -  | -  | 2  | -11    | 82    |



Round 9 Runs

|     |         |                             |
|-----|---------|-----------------------------|
| 14. | 14 - 07 | London to The West          |
| 15. | 22 - 13 | Aylesbury to London         |
| 16. | 55 - 41 | Walsall to Banbury          |
| 17. | 61 - 32 | Derby to Bedford            |
| 18. | 34 - 03 | Northampton to The North    |
| 19. | 24 - 66 | Watford to Lincoln          |
| 20. | 54 - 16 | Wolverhampton to London     |
| 21. | 46 - 01 | Leicester to The North West |

| Runs          | Builds                                       |
|---------------|--|
| Enter up to 4 | Up to 10 points excluding payments to rivals |



|                               |  |                |
|-------------------------------|--|----------------|
| <b>RAILWAY RIVALS 2206-NE</b> | Most of the distant towns are connected. | <b>ROUND 5</b> |
|-------------------------------|--|----------------|

New England (15 points for these builds)

Railways in New England (RINE) (Pete Campbell, Blue)  
 S12 - V11 - X12 - Y11 - Falmouth, V22 - V24 - W24 - W27.  
 29 +3 (towns) +2/-1 (GREAT) +5/-1 (HEART) -1 (RRR) -1 (AOL) = 35

Graystone Railways Entertain Another Territory (GREAT) (Michael Graystone, Brown)  
 T13 - T15 - R16 - R22, Manhattan - Brooklyn, T15 - Boston, R17 - Lowell.  
 62+1/-2 (RINE) -1 (HEART) -2 (RRR) = 58

Ham's Engineers Are Rather Terrific (HEART) (Steve Ham, Purple)  
 C6 - Brooklyn, Rutland - H27 - G27 - G29 - E30 - Burlington, Y26 - Y27.  
 34 +9 (towns) +1/-5 (RINE) +1 (GREAT) +4/-2 (AOL) = 42

Reeve's Rapid Railroad (RRR) (Mike Reeves, Green)  
 Lewiston - A69 - C70 - Augusta - Waterville, T27 - T28 - S28 - Conway, S32 - Berlin,  
 Boston - V15 - Brockton - X13.  
 73 +15 (towns) +1 (RINE) +2 (GREAT) +6 (AOL) = 97

America On Line (AOL) (Roger Trethewey, Black)  
 Y27 - B69 - B70 - C70 - Augusta, C4 - Brooklyn, St.Johnsbury - I34 - H34.  
 39 +1 (RINE) +2/-4 (HEART) -6 (RRR) = 32

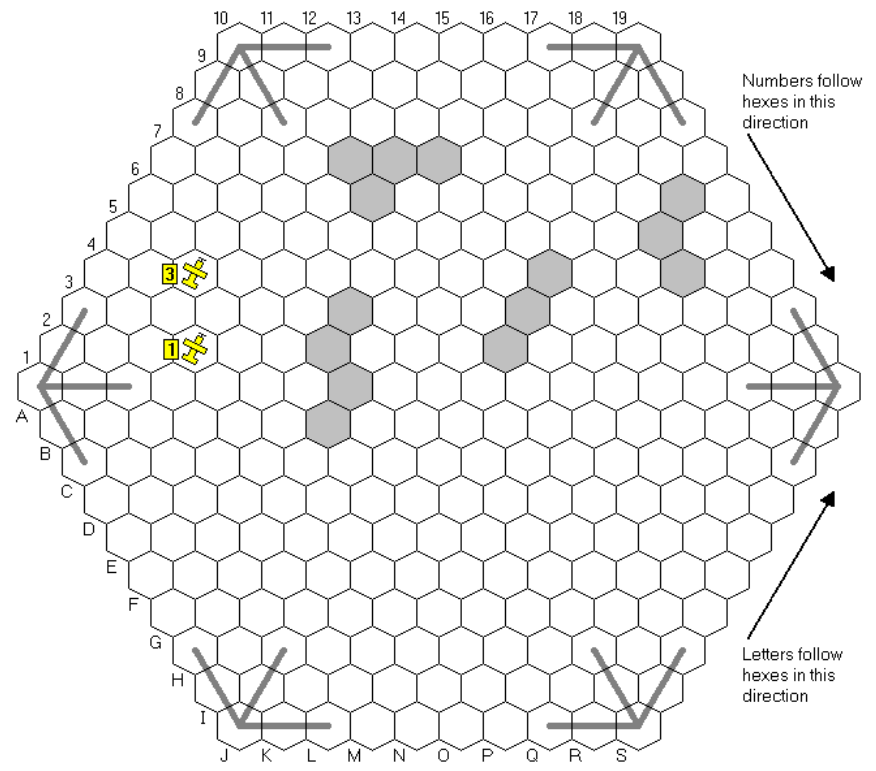
Steve, you're being a bit quick to write down the hex references you want. Don't just look at one number and assume which way the number run, check to see if you need to count up or down from the number you can see. The further up the map, the higher the numbers.

| Builds                                       |
|--|
| Up to 12 points excluding payments to rivals |



|                       |                       |                 |
|-----------------------|-----------------------|-----------------|
| <b>SOPWITH T353FW</b> | No damage this round. | <b>ROUND 26</b> |
|-----------------------|-----------------------|-----------------|

| Pilot   | Starts | Moves                                     | Ends  | A:D:P    |
|---|--------|---|-------|----------|
| 1 <i>The Brown Baron</i><br>♠ Michael Graystone | D2-NW  | RT-f-LA, A, A<br>(2 kills) (Airfield: A1) | D5-NE | 13:11:41 |
| 3 <i>Wizard Prang</i><br>Jim Reader             | C3-NE  | A, A, A<br>(Airfield: J19)                | C6-NE | 11:05:00 |



The clouds moved north west. *The Brown Baron* keeps his upper hand, as he has *Wizard Prang* caught between his line of fire and the edge of the combat area.

**NEWS FROM THE ROCK**

[www.fwtwr.com/fwtwr/](http://www.fwtwr.com/fwtwr/)



This is the section that provides news of the Internet sibling of this zine.

- ✦ The number of games being run on the web site is shrinking, with the bias tending towards 18xx games, even though I am limiting the number of those I am running at the same time.

The reason is not so much a lack of interest on my part, but more to do with the fact that the games on offer are all older varieties. I am working towards changing this, and am currently developing an adjudicator for Castles of Burgundy, which should attract more interest. There are other places you can play this online, but my offerings are for those who do not care for the speed or pressure of many online games.

- ✦ Here are the current web ratings for active players with a rating of 2 or more. People are included if they have competed five or more games.

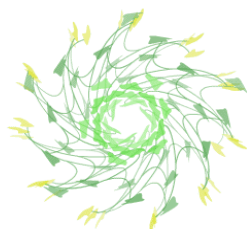
|                               |       |   |
|-------------------------------|-------|---|
| - Ken Boucher . . . . .       | 3.485 | The rating system is:<br><br>5 points for a win<br>3 points for second<br>1 point for third |
| - William Jockusch . . . . .  | 3.400 |   |
| ▲ Pete Campbell . . . . .     | 2.788 |   |
| - David Hilbert . . . . .     | 2.682 |   |
| ▲ Rob Thomasson . . . . .     | 2.661 |   |
| ▲ Victor Cronshaw . . . . .   | 2.553 |   |
| ▼ Michael Graystone . . . . . | 2.188 |   |
| ▲ John Colledge . . . . .     | 2.172 |   |
| ▼ Mick Haytack . . . . .      | 2.084 |   |

- ✦ Completed games and winners:

Puerto Rico e984 . . . . . Randall Nelson  
 Saint Petersburg e989 . . . . . Rob Thomasson

- ✦ New games and start dates:

Puerto Rico e1000 . . . . . Jan 18th ✦



**GAME ORDERS**

Please observe these guidelines when sending your orders.

- ✦ The game name *and game number* must be given for each set of orders.
- ✦ Your own name and where relevant, your company name and game colour, must be given for all game orders, preferably at the top of the orders.
- ✦ When you need to refer to other players in a game, you should use their company name *and* colour if these are present in the game.
- ✦ Do not use both sides of the same sheet of paper for different games.
- ✦ When sending orders via e-mail, make sure they are sent as *plain text*, with *FWTDR* or *die rolls* somewhere in the subject line.
- ✦ E-mail orders should be sent to one address only. You may know of more than one address that can reach me, but they all converge on one mailbox. When orders are sent to more than one source, I have to check they are in fact identical.
- ✦ Leave a reasonable space between orders for different games so that they can be easily separated and filed. If you're typing your orders, put at least three blank lines between orders for different games. I expect a minimum of two inches of paper for each game. On the other hand, please do not submit orders using double-line spacing throughout, as this tends to push a simple set of orders onto two sheets of paper.
- ✦ Remember that the deadlines given are when the orders should reach me, *not* when orders should be sent. Please do not rely on speedy postal delivery, or on instant e-mail delivery.

**Handling NMRs (No Move Received)**

- ✦ If you normally post orders to me and I do not have an e-mail address for you, I cannot remind you but will give as much time as possible for late orders to arrive.
- ✦ If I have an e-mail address for you, I will usually send a reminder the day after the deadline, although this is not guaranteed.
- ✦ If you are unable to provide orders straight away, it is of immense help if you can reply to any reminder and let me know when you hope to provide orders.
- ✦ Games will not normally be held over due to a shortage of orders.
- ✦ My actions for a player with no orders depends on the game, but usually involves holding still unless the game has specific rules for NMRs. For Bus Boss and Railway Rivals runs, I will take a brief look at the game and enter the player runs that cost the least, to avoid skewing the results for the other players.
- ✦ If orders arrive once I have adjudicated a game, I may rerun it, but this is entirely at my discretion and depends on how much time I have. ✦

**GAME STANDARDS**

**Games that involve auctions**

I interpret auction orders in the following way.

A bid for a specific figure means just that - you will bid that figure and nothing else. If you want to bid above a previous bid and are willing to go to a maximum bid, then order your bid *up to* that maximum. You will then bid the minimum possible, and keep bidding until you win the auction or reach your maximum. If you are entitled to any discounts, do not deduct the discount before bidding. Any applicable discounts will be deducted after the auction is over.

**Bus Boss and Railway Rivals**

For Railway Rivals, the games I run use a single building allowance during the building rounds, rather than three separate die rolls.

During the operating rounds, Bus Boss scoring is used for both games. This shares 30 points between all entrants. If only one player enters a run, they get the full 30 points (less any payments they need to make to rivals). Players who complete a run in the same turn share placings. If shared placings mean that points cannot be shared evenly, the poorer player at the time of the run gains the odd point. If the players are tied before the run, the odd point is discarded.

When ordering for operating rounds, you should always list the runs in their proper sequence. You should not list runs you are not entering, as this often makes orders more confusing. If one or more runs is conditional on joint runs or other arrangements being accepted, the conditional order should appear against the run so that I can check the conditions before proceeding.

The maximum you may pay any single player in a run is ten points. If the length of the route you need to enter a run is more than twice the shortest route of any other entrant, your entry will be rejected, but that run will count towards the number that you are allowed to enter.

Rules for carried over runs:

Bus Boss:  
The limit of five runs applies at all times.

Railway Rivals:  
If 1 run is carried over, then you are still limited to 4 runs.  
If 2 or 3 are carried over, then you can enter 5 runs.  
If 4 or 5 are carried over, then you can enter 6 runs.  
If 6 or 7 are carried over, then you can enter 7, and so on, but the referee may need sorting out if it gets this bad (i.e. building allowances were too small).  
In all these cases, you can choose your runs from all those available.

**WHO PLAYS WHAT**

- Howard Bishop . . . HS1
- Pete Campbell . . . 7W1, 1829-A30, 1861-E33, Bat5, BB-333-CRO, RR-2206-NE
- John Colledge . . . . Acq59
- Bob Coull . . . . . BB-333-CRO, BB-335-GMY, RR-2205-M
- Mark Frueh . . . . . 1856-E31
- Michael Graystone . Acq59, BB-333-CRO, RR-2194-MN, RR-2206-NE, Sop353
- Lyndon Gurr . . . . . 7W1, 1861-E33 Acq59
- Steve Ham . . . . . Bat5, RR-2194-MN, RR-2206-NE
- Mike Hutton . . . . . 1825-X31, 1861-E33
- Kevin Lee . . . . . 7W1, BB-333-CRO, RR-2194-MN
- Michael Longdin . . HS1
- John Marsden . . . . Bat5, BB-335-GMY, RR-2194-MN, RR-2205-M
- Willem Moene . . . . 1825-X31, 1830-S32
- Marcus Pratt . . . . . Bat5, OP29
- Jim Reader . . . . . 7W1, BB-333-CRO, RR-2194-MN, RR-2205-M, Sop353
- Mike Reeves . . . . . 7W1, BB-335-GMY, RR-2206-NE
- Lionel Robbins . . . 1825-X31, 1829-A30
- Adam Romoth . . . . 1830-S32, 1856-E31
- Don Shailer . . . . . RR-2205-M
- Colin Sharpe . . . . . Acq59, BB-335-GMY, RR-2205-M
- John Shelley . . . . . 1825-X31, 1829-A30, 1830-S32, 1856-E31, 1861-E33
- Don Smith . . . . . 1830-S32, 1856-E31, 1861-E33
- Allan Stagg . . . . . 7W1, Bat5
- Mark Stretch . . . . . Bat5
- Rob Thomasson . . . 1829-A30, 1856-E31, HS1
- Roger Trethewey . . BB-335-GMY, RR-2206-NE
- Tony Wilcock . . . . Acq59



**OUTSIDE EDGE**

FOR WHOM THE DIE ROLLS is brought to you by:  
Keith Thomasson, 14 Stepnells, Marsworth, Near Tring, Herts, HP23 4NQ

**CONTENTS**

|                        |    |                              |       |
|------------------------|----|------------------------------|-------|
| ◇ Games ◇              |    |                              |       |
| *****                  |    |                              |       |
| ◇ Current ◇            |    |                              |       |
| 1825-X31 .....         | 4  | Homesteaders 1 .....         | 22    |
| 1829-A30 (South) ..... | 6  | Railway Rivals 2194-MN ..... | 23    |
| 1830-S32 .....         | 8  | Railway Rivals 2205-M .....  | 25    |
| 1856-E31 .....         | 10 | Railway Rivals 2206-NE ..... | 26    |
| 1861-E33 .....         | 12 | Sopwith T353FW .....         | 27    |
| 1870-A32 .....         | 13 | *****                        |       |
| 7 Wonders 1 .....      | 14 | ◇ Bits and Bobs ◇            |       |
| Acquire 59 .....       | 15 | Deadlines .....              | Below |
| Battle! 5 .....        | 16 | Game Orders .....            | 29    |
| Bus Boss 331-SCT ..... | 18 | Game Standards .....         | 30    |
| Bus Boss 333-CRO ..... | 19 | News from the Rock .....     | 28    |
| Bus Boss 335-GMY ..... | 20 | Ratings .....                | 24    |
|                        |    | Waiting Lists .....          | 2     |
|                        |    | Who Plays What .....         | 31    |
|                        |    | Zines Received .....         | 24    |



**DEADLINES**

**All games - Friday March 1st**

Future deadline: All games: April 5th

E-mail orders must be sent as plain text messages. Do not send as e-mail attachments.  
Unreadable submissions may be treated as No Move Received.

